

THE CONTEMPORARY VINTAGE



Hands[®]

GraphX

~COLLECTION~

NEW DELHI • MUMBAI • DUBAI

THE CONTEMPORARY VINTAGE



The world as it is seen through the prism of geometry. Lines and planes meet and then seek disparate ways. Together, they form an entity that defines the vortex of space in motion.

This is the portal through eras; past and present, with a flickering glimpse of the future.

Consider the GraphX Collection to be a forge that bonds the abstract and reality to an everlasting frame. Look at it as an invitation for the mind to find colour in a black and white canvas.

Each piece is hand knotted in 100% botanical silk or hand tufted in 100% bamboo silk.

This is a dimension where the contemporary and the vintage are not at the two ends of time. They are time.

Hands[®]

fine handmade carpets since 1881

GLITZ

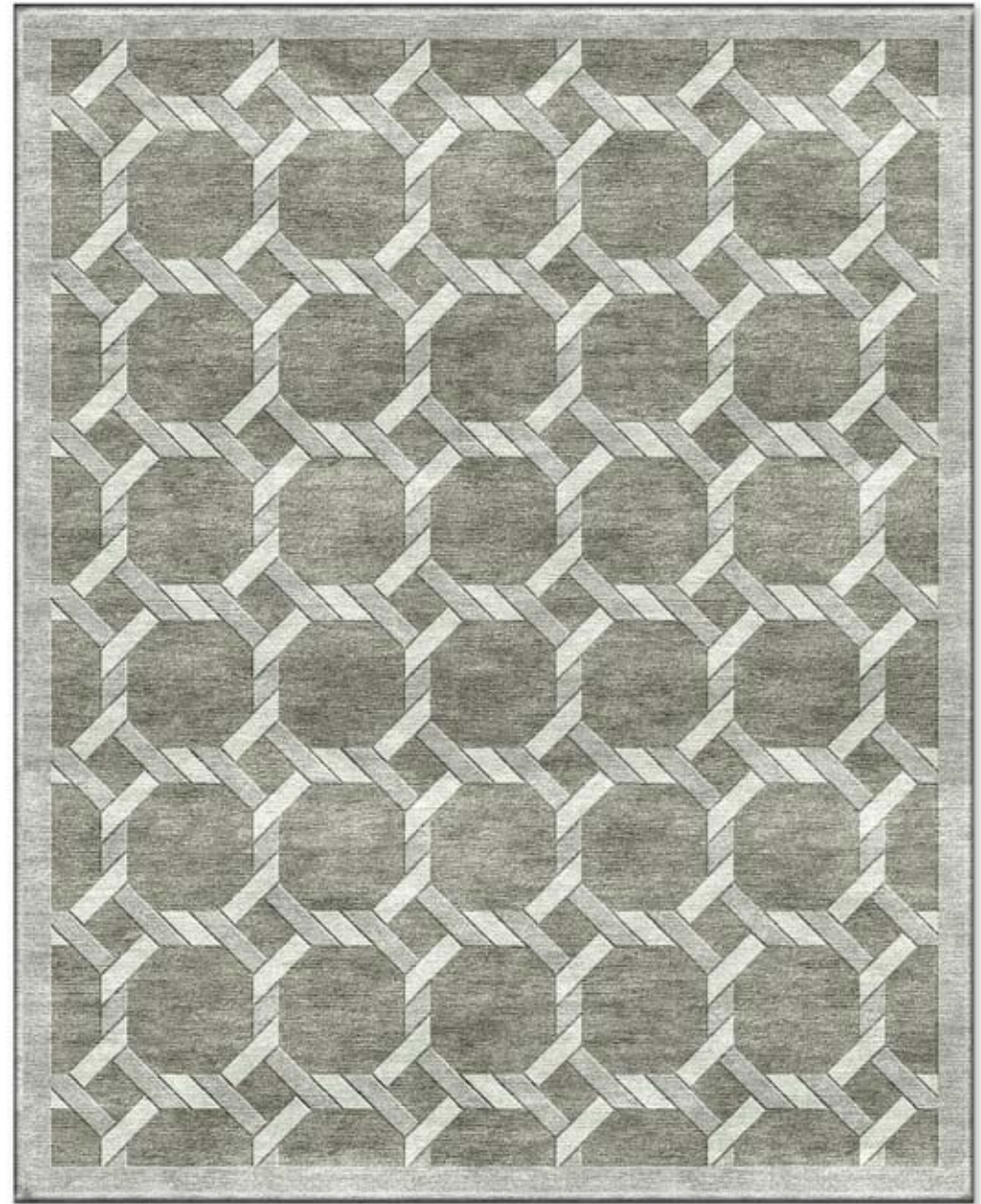
There is something special about
the letter 'zed'.

You can almost feel the sound of zed
vibrating in this carpet.

That interwoven pattern seems to say 'zing'.
Geometric shapes at play reach out for 'zest'.
Step back and you will sense a glamorous zone
surrounding GLITZ .



Hands®



GLITZ Silver Taupe

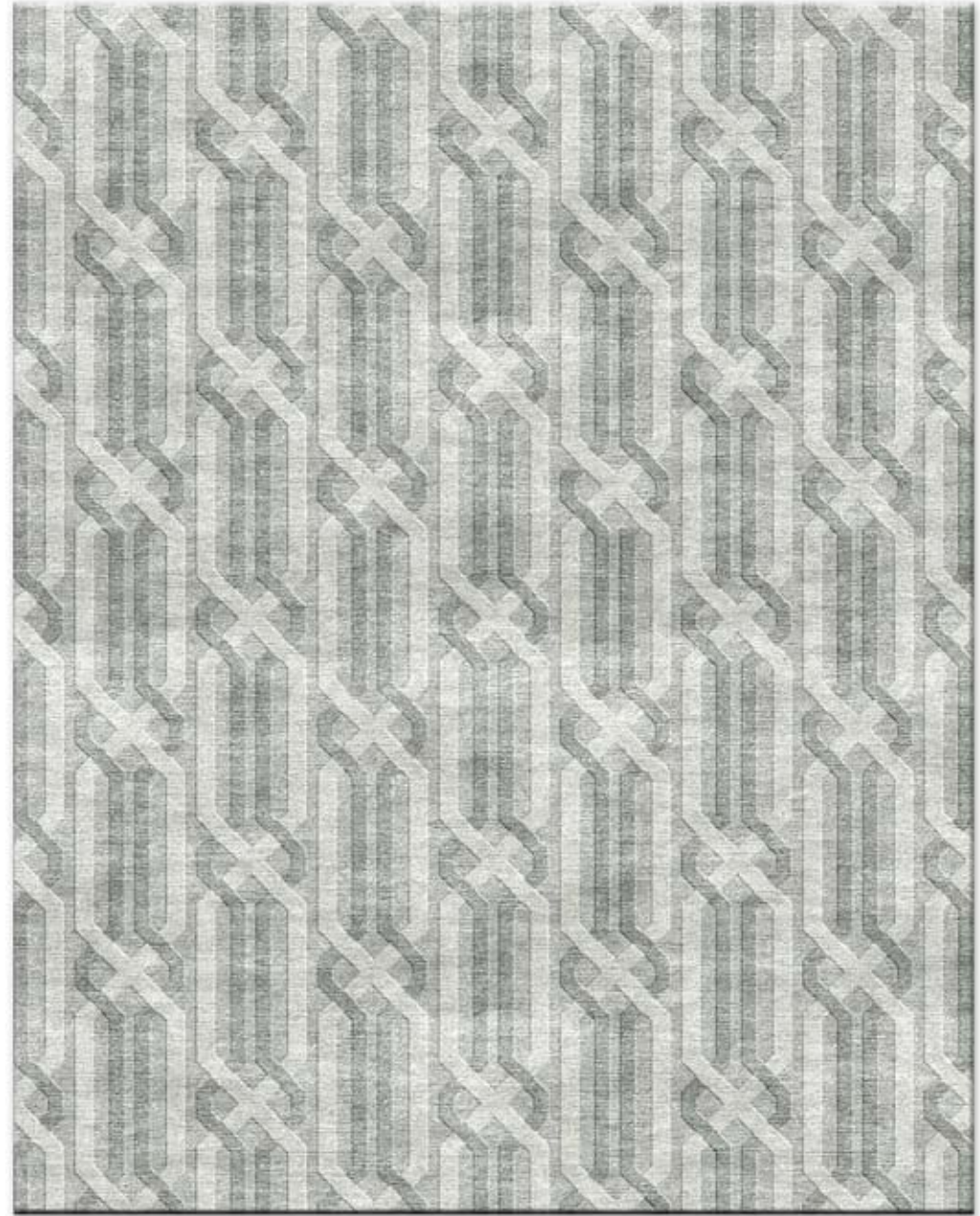
Available in 5'6" x 8' , 6' x 9' , 8' x 10' , 10' x 14'

Hand knotted in 100% botanical silk

Hands®

ARCHER

Straight lines connected by notches;
the Long Bow of ye olde English archers.



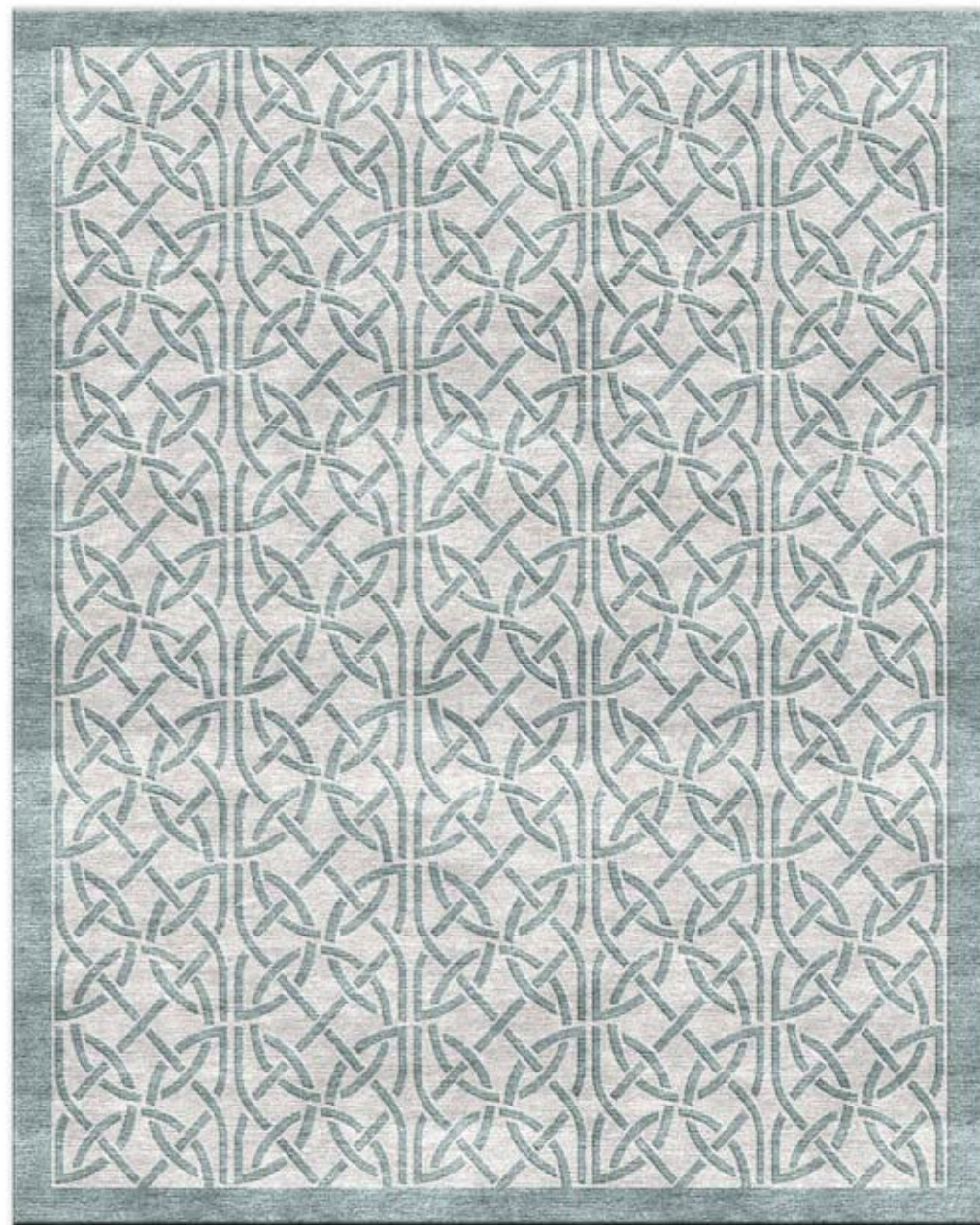
ARCHER Grey

Available in diameters of 5'6" x 8', 6' x 9', 8' x 10', 9' x 12', 10' x 14'
Hand knotted in 100% botanical silk

Hands®

AXIS

Lines almost meeting, circles almost complete. An ever changing axis.



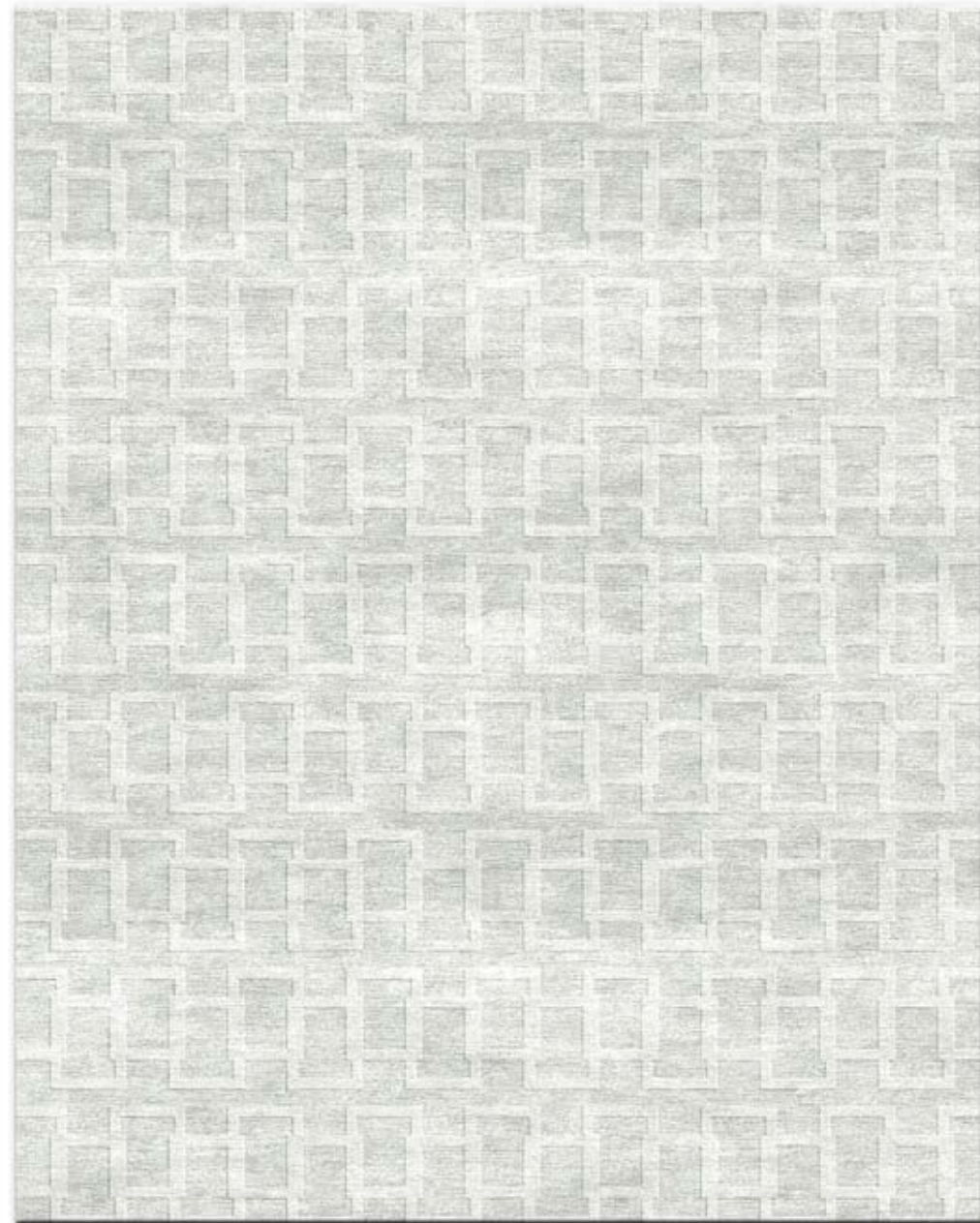
AXIS Blue Grey

Available in diameters of 5'6" x 8', 6' x 9', 8' x 10'
Hand knotted in 100% botanical silk

Hands®

BALANCE

Windows to the mind
or an early computer game - tetris?
Equally at home with either.



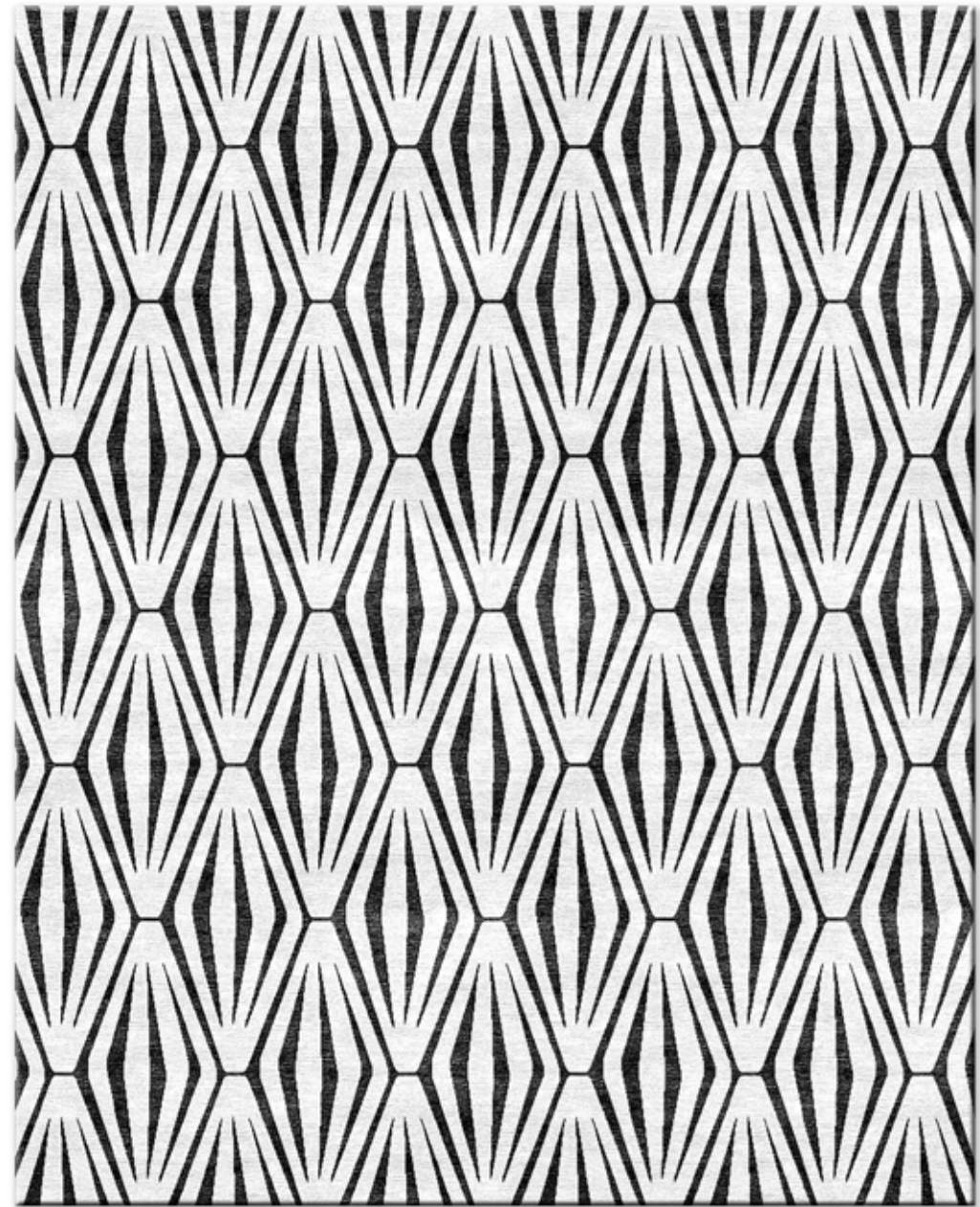
BALANCE Silver

Available in diameters of 5'6" x 8', 6' x 9', 8' x 10', 9' x 12'
Hand knotted in 100% botanical silk

Hands®

DUAL

Same character with two sides.
Day and night.
Could this be Dr. Jekyll and Mr. Hyde?



DUAL Black and White

Available in 5'6" x 8', 6' x 9', 8' x 10'
Hand knotted in 100% botanical silk

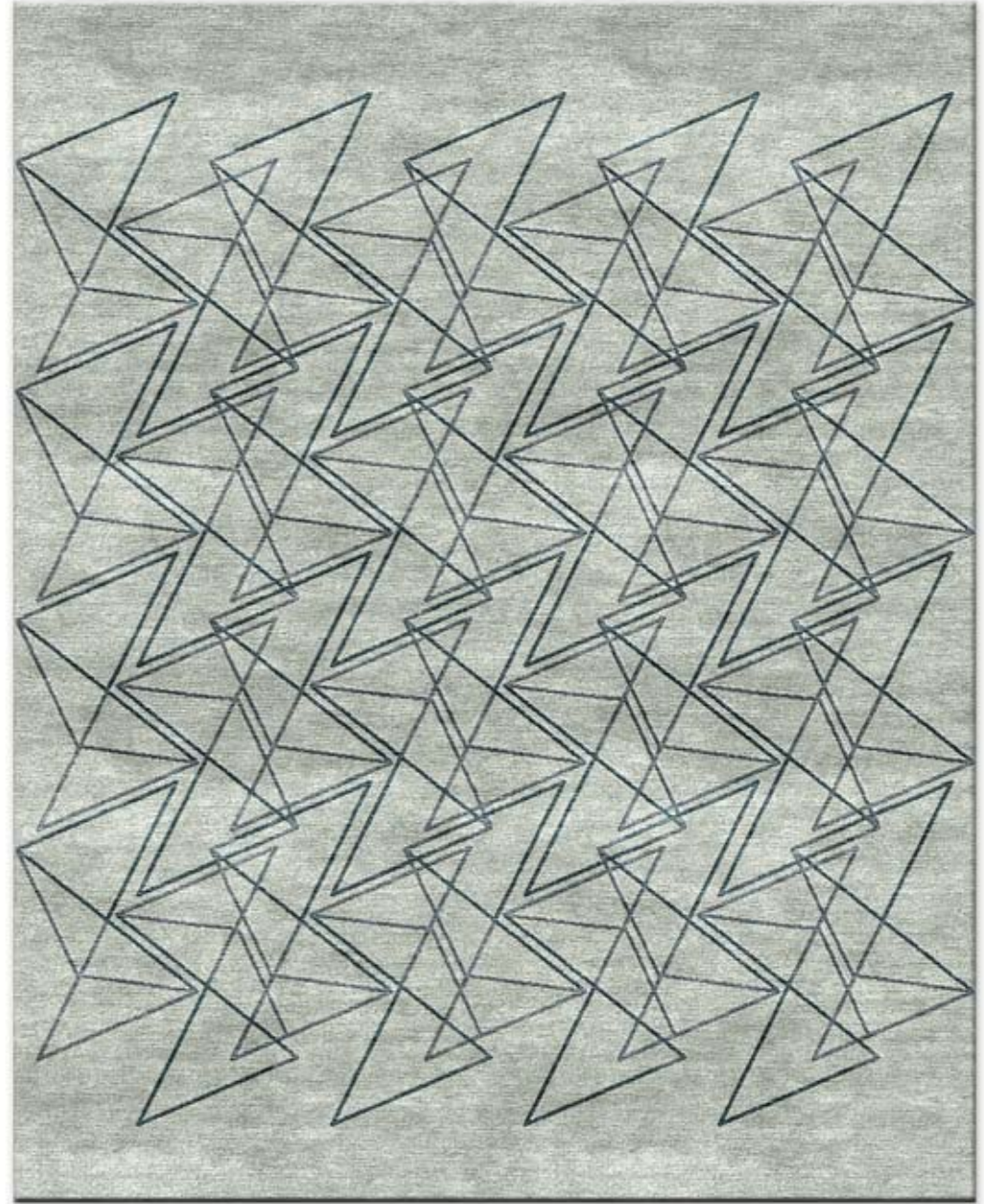
TANGENT

Squares and triangles or
invitation envelopes?

There is an interesting oddity in this design.
The shapes are simple yet, at the same time,
form patterns in an altogether different language.
This carpet has a line of thought away from the obvious;
the very definition of TANGENT.



Hands®



TANGENT Blue Grey

Available in 5'6" x 8', 6' x 9', 8' x 10'
Hand knotted in 100% botanical silk

Hands®

MAZILY

Does this design leap out or pull back?
An individual's point of view,
a perspective of time.



MAZILY Gold

Available in 5'6" x 8', 6' x 9', 8' x 10', 9' x 12', 10' x 14'
Hand knotted in 100% botanical silk

Hands®

TRINITY

Sets of three woven as one.
Very practical, yet open to imagination.



TRINITY Beige

Available in 5'6" x 8', 6' x 9', 8' x 10', 9' x 12', 10' x 14'
Hand knotted in 100% botanical silk

Hands®

TREILLAGE

An entombed Greek Orthodox cross,
viewed from far away.
History always comes around.



TREILLAGE Taupe

Available in 5'6" x 8', 6' x 9', 8' x 10'
Hand knotted in 100% botanical silk

ORIX

A circle has no beginning,
no end.

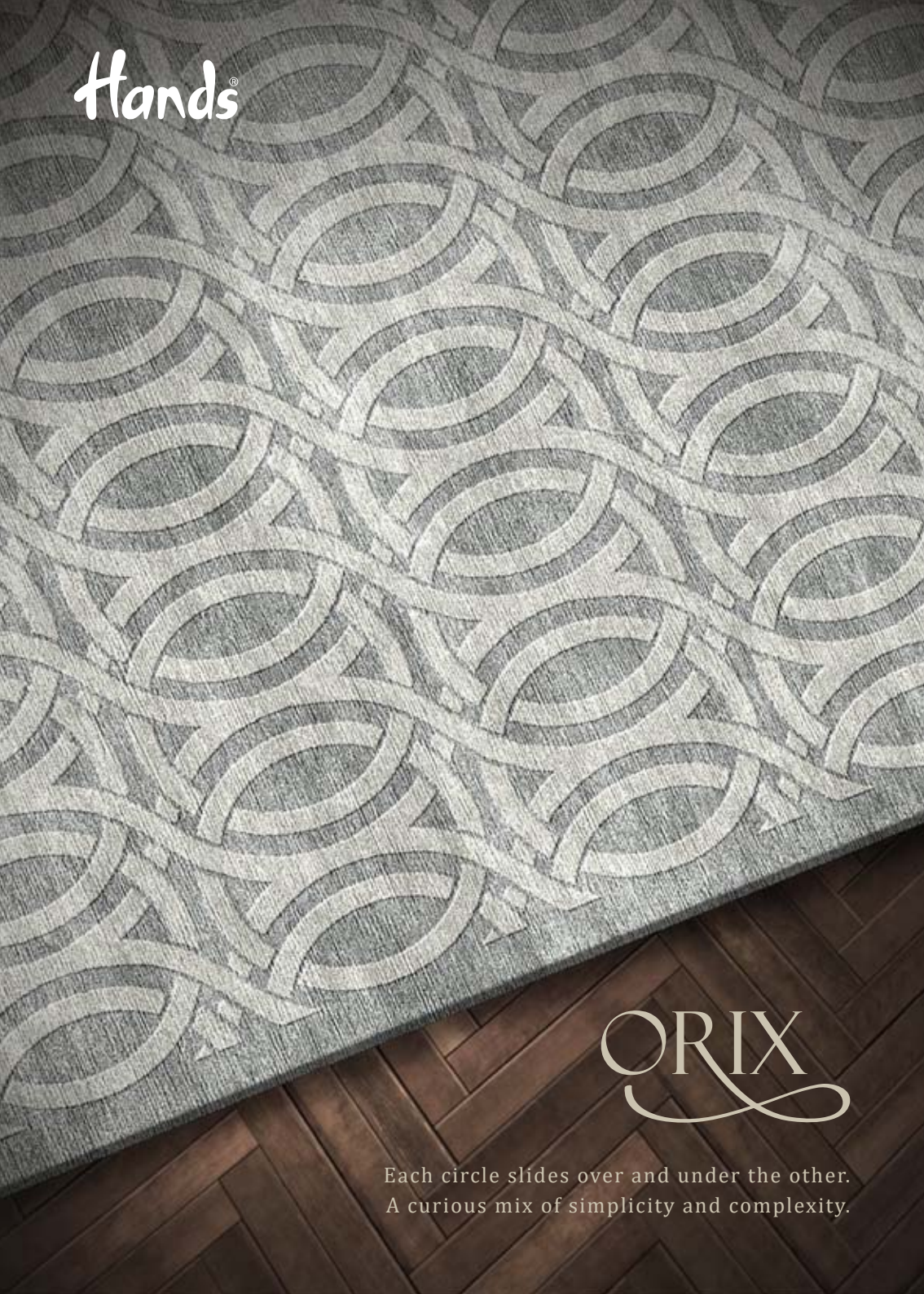
Here is a motif easily recognised
but with a curious appeal.

Notice how each circle slides over and under
in a simple, yet complex, continuous manner.

This carpet presents originality (ori)
and infinity (x) as one entity: ORIX.

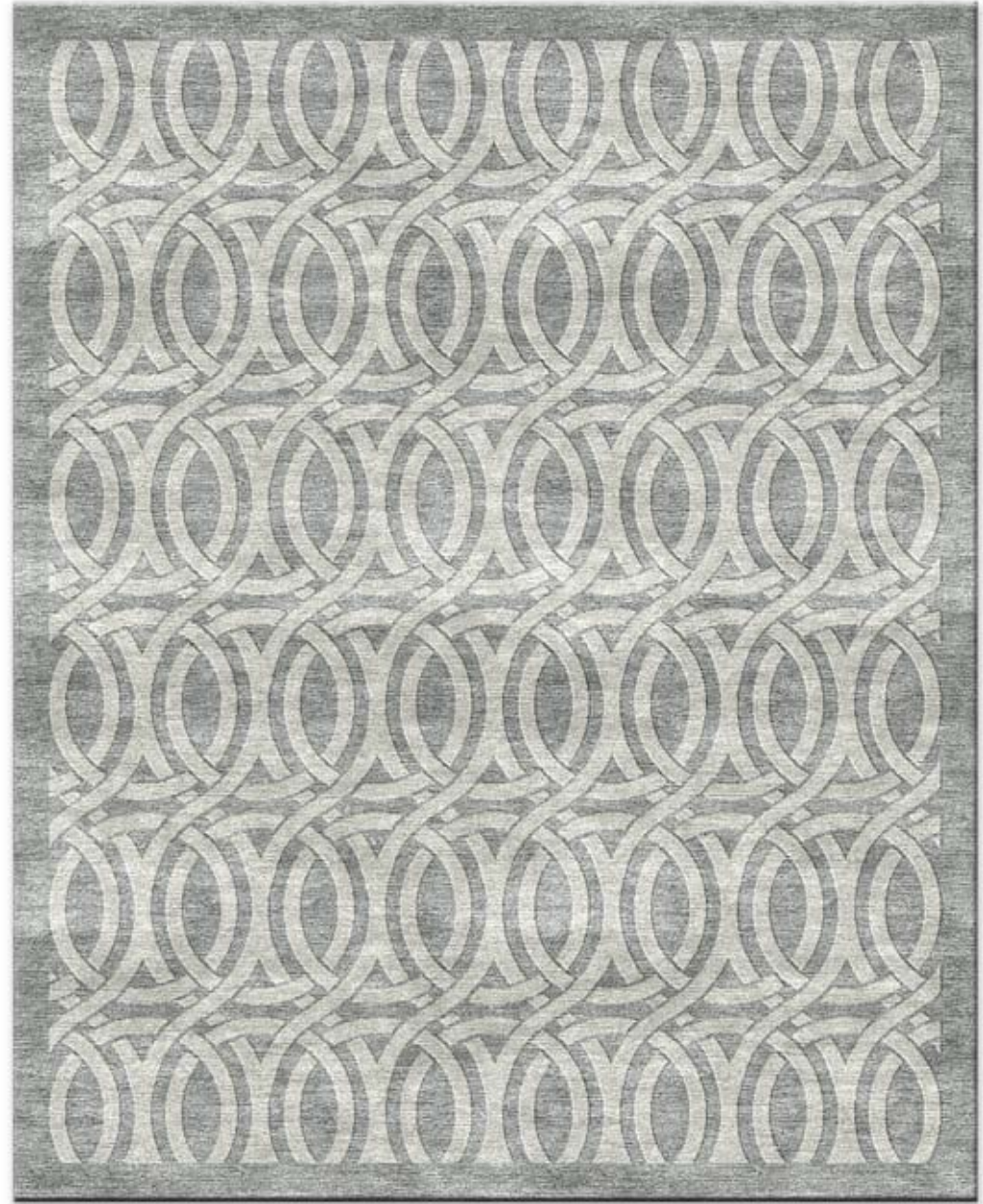


Hands®



ORIX

Each circle slides over and under the other.
A curious mix of simplicity and complexity.



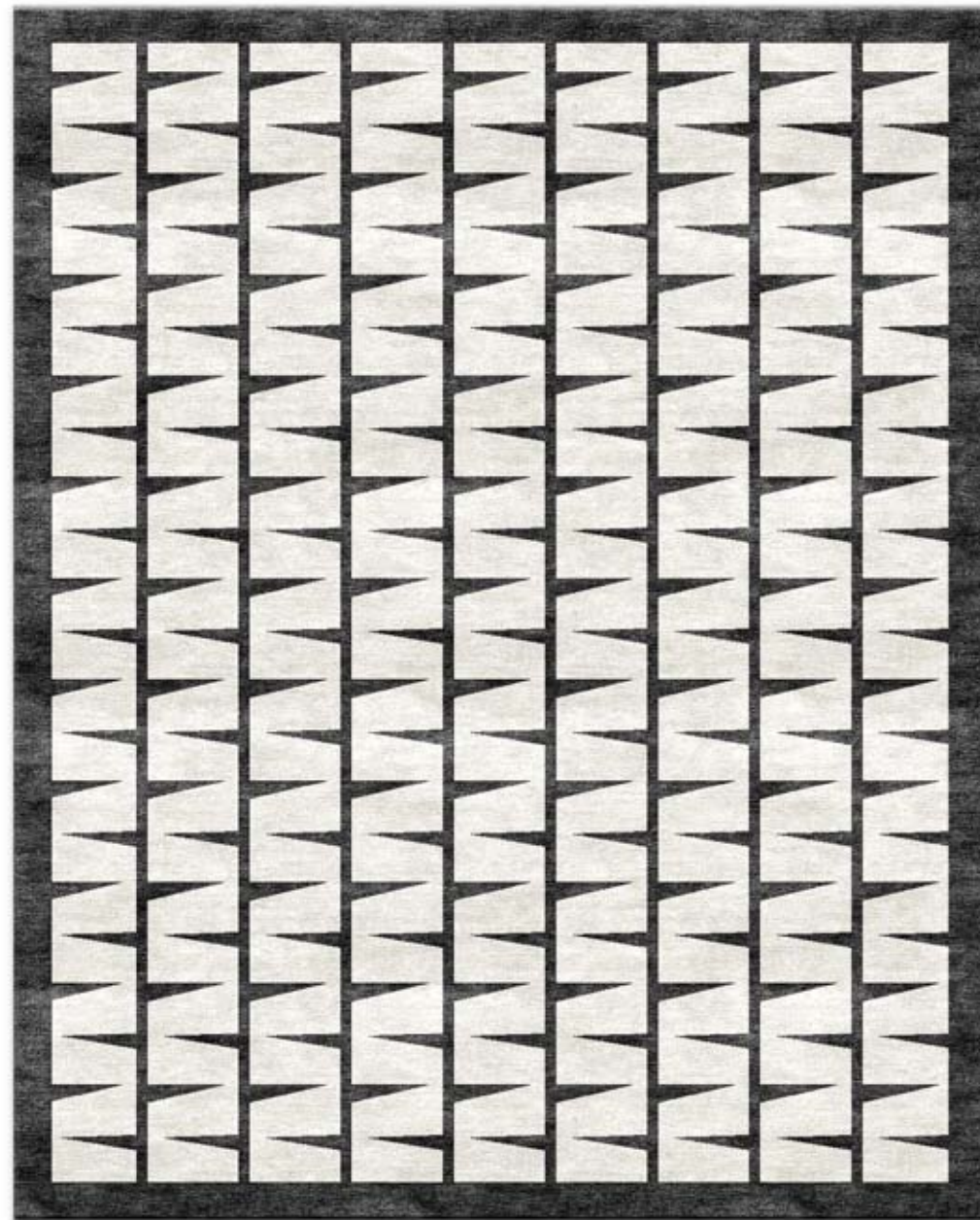
ORIX Grey

Available in 4'6" x 6'6", 5'6" x 8', 6' x 9', 8' x 10', 9' x 12'
Hand tufted in 100% bamboo silk

Hands®

ARRAY

Lines vertical, rows horizontal.
Letters arranged in the alphabet
of the Roman script.



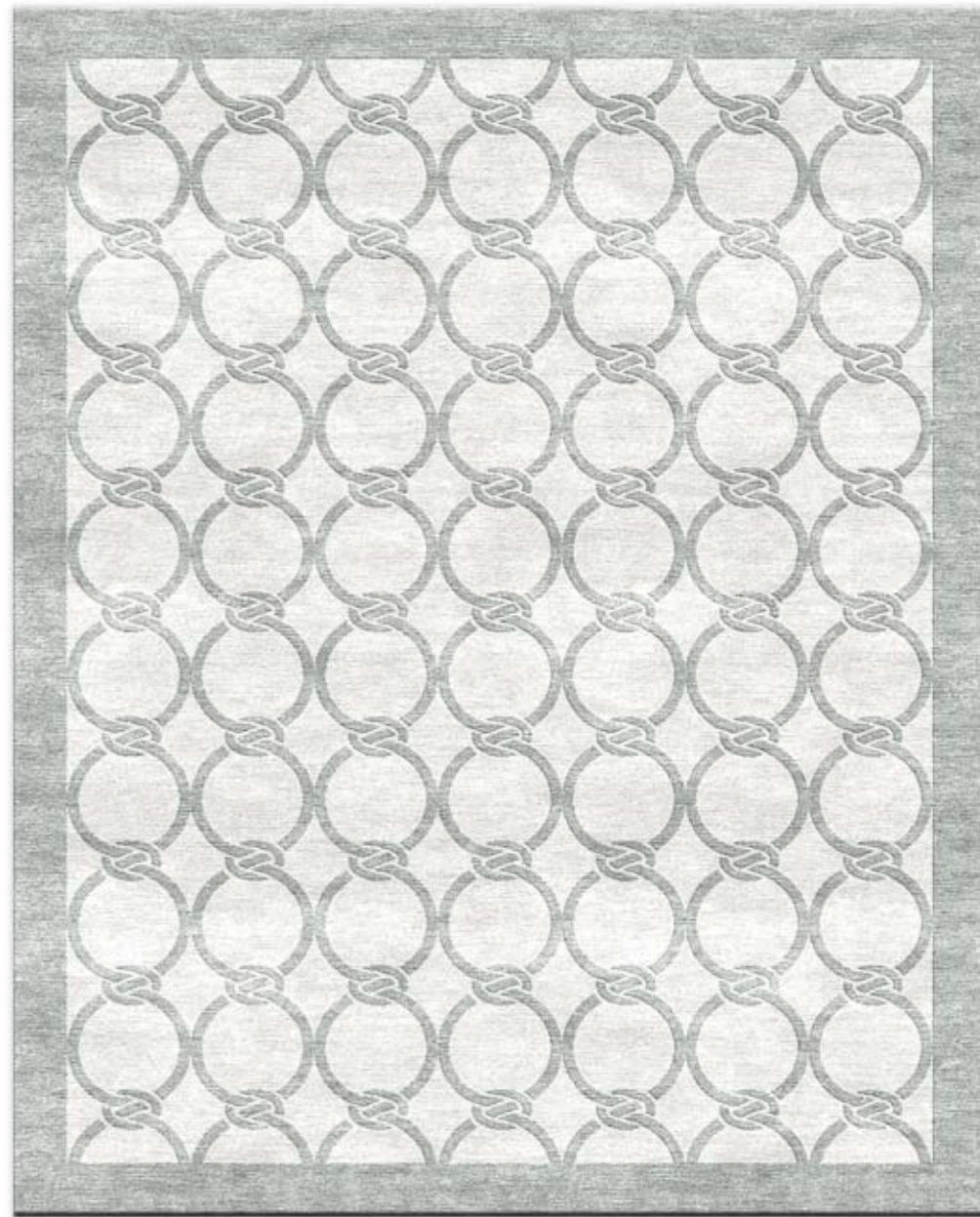
ARRAY Black and White

Available in 4'6" x 6'6", 5'6" x 8', 6' x 9', 8' x 10', 9' x 12'
Hand tufted in 100% bamboo silk

Hands®

RADIAL

Whorls bound in chains.
No beginning, no end.



RADIAL Ivory

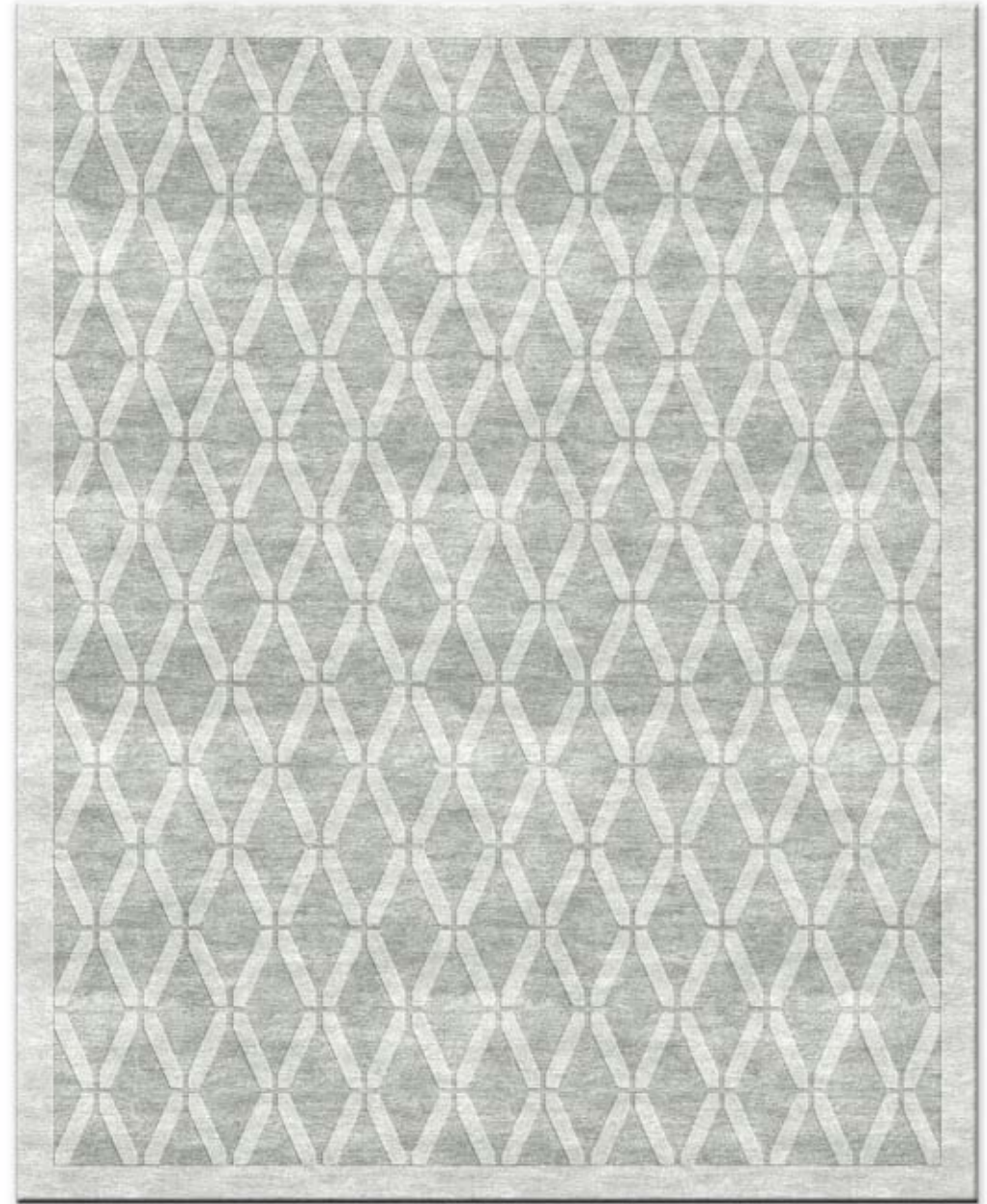
Available in 4'6" x 6'6", 5'6" x 8', 6' x 9', 8' x 10', 9' x 12'
Hand tufted in 100% bamboo silk

Hands®



TRIAD

Three clear sections.
A diamond, an X, and the space in between.



TRIAD Silver Grey

Available in 4'6" x 6'6", 5'6" x 8', 6' x 9', 8' x 10', 9' x 12'
Hand tufted in 100% bamboo silk

Hands®

VECTOR

Sharp straights, soft turns.
A maze for the eyes.



VECTOR Blue

Available in 4'6" x 6'6", 5'6" x 8', 6' x 9', 8' x 10', 9' x 12'
Hand tufted in 100% bamboo silk

SOLOMON

There is wisdom in this weave.

Waves flow through rigid blocks,
like a stream in a rocky land.

These are thoughts that appear to meander,
yet strike a straight path.

Here is a carpet named after the fabled wisdom
of King Solomon, also known as SALOMON.



Hands®

SOLOMON

Sharp edges and soft curves.
Waves of meandering thoughts
striking a straight path.



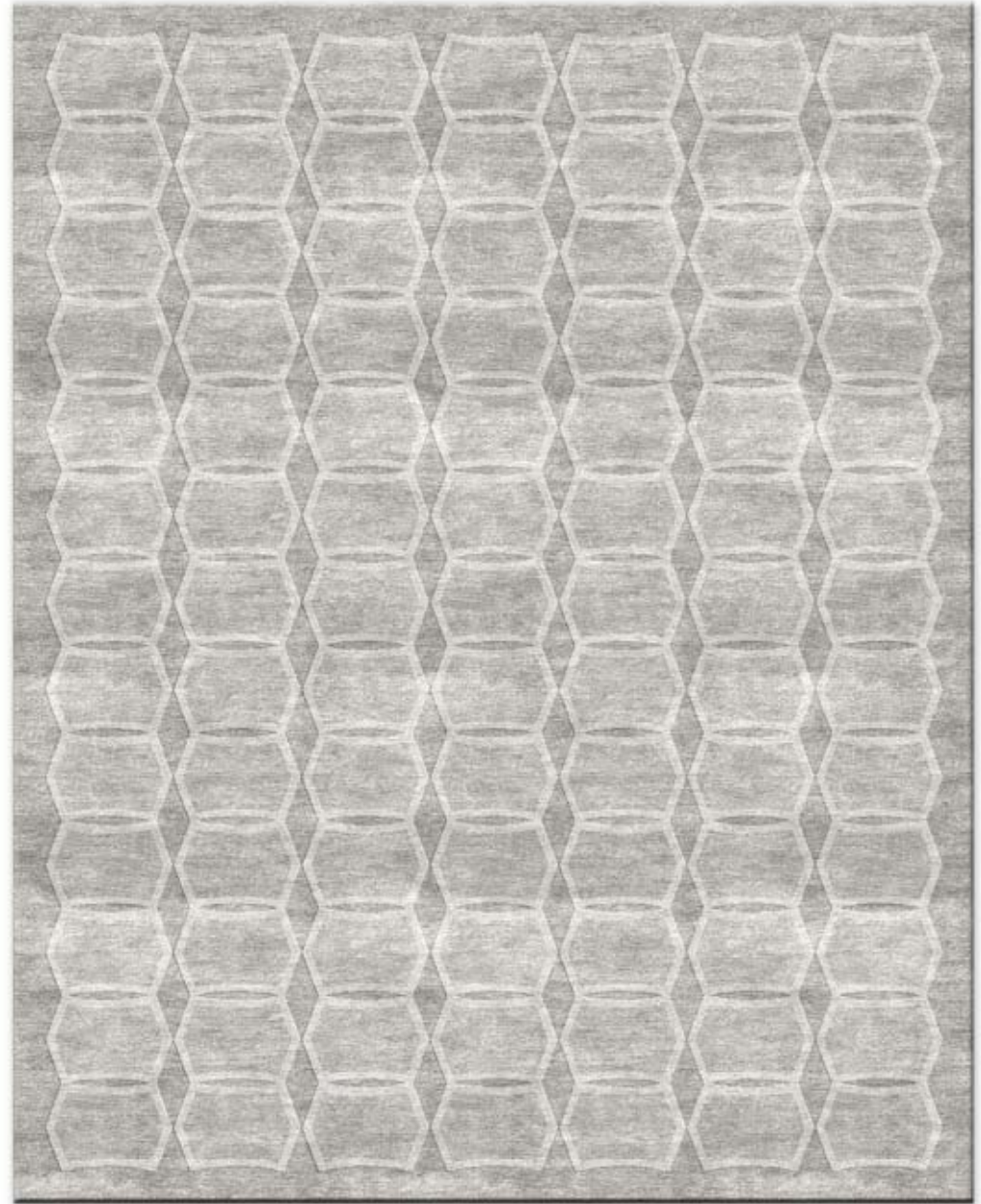
SOLOMON Taupe

Available in 4'6" x 6'6", 5'6" x 8', 6' x 9', 8' x 10', 9' x 12'
Hand tufted in 100% bamboo silk

Hands®

TRAPEZA

Simple geometry. Complex questions.
Trapezoid or not.



TRAPEZA Grey Taupe

Available in 4'6" x 6'6", 5'6" x 8', 6' x 9', 8' x 10', 9' x 12'
Hand tufted in 100% bamboo silk

Hands®



VERGE

Verticals overwhelming horizontals.
Looks simple, but isn't.
Only one way in and out at every level.



VERGE Beige Blue

Available in 4'6" x 6'6", 5'6" x 8', 6' x 9', 8' x 10', 9' x 12'
Hand tufted in 100% bamboo silk

Hands®

VERTEX

Playfully deceitful.
A pattern almost linked, almost apart.



VERTEX Gold

Available in 4'6" x 6'6", 5'6" x 8', 6' x 9', 8' x 10', 9' x 12'
Hand tufted in 100% bamboo silk

THE CONTEMPORARY VINTAGE



Hands[®]

GraphX

~COLLECTION~

New Delhi (Flagship Store) 372/74, MG Road, Sultanpur. Call +91 11 26806475/8
Mumbai Gala No. 32R / 32H, Laxmi Industrial Estate, Andheri (W). Call +91 22 26320609.
del@hands-carpets.com | www.handscarpets.com

Dubai Hands Carpets FZ-LLC, Ground Floor, Building 9, Dubai Design District.
Call +971 58 8250 464 / 574, +971 4 589 8510. info@handscarpets.ae | www.handscarpets.ae